

1

2

3

4

A

A

B

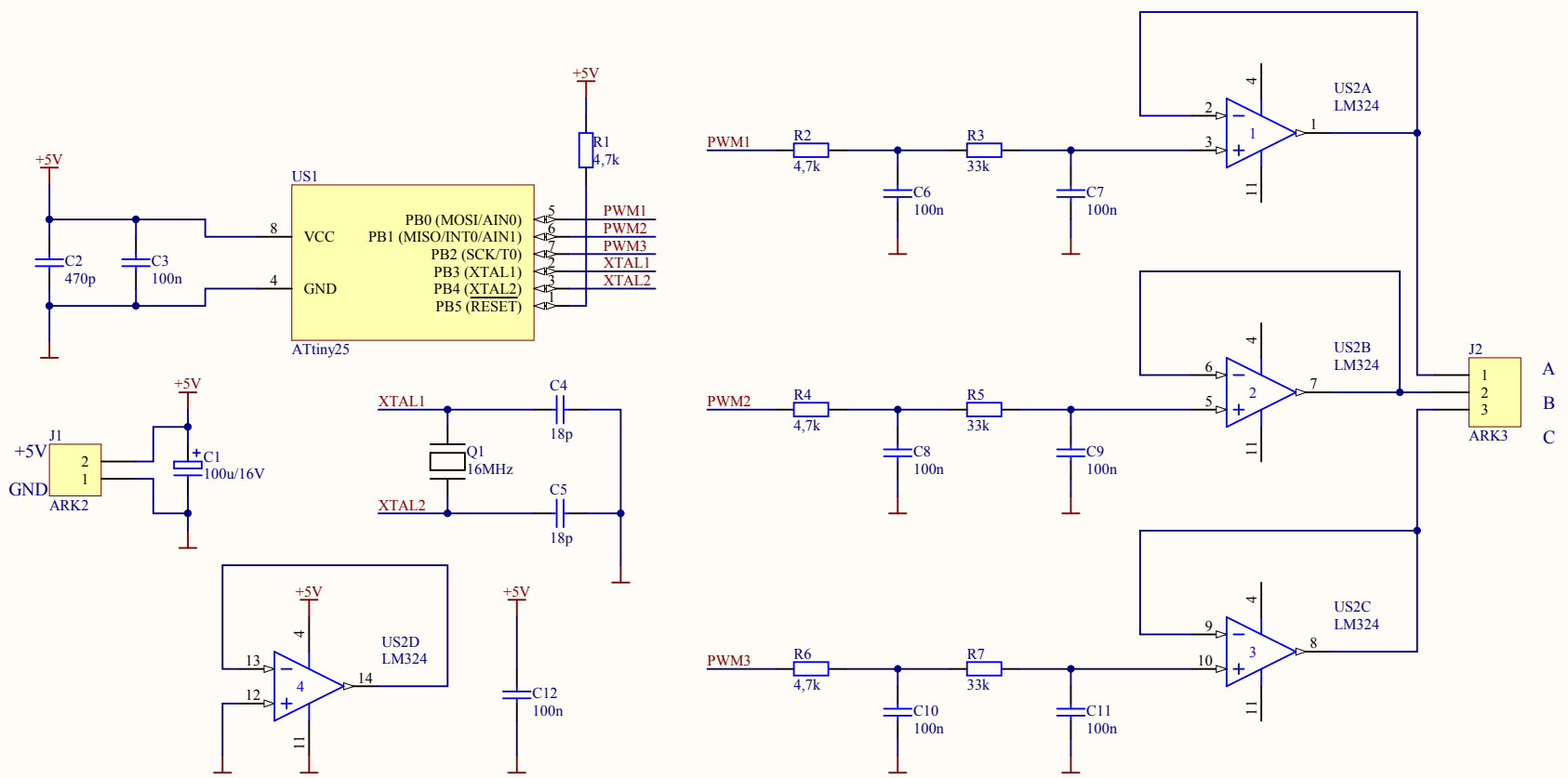
B

C

C

D

D



| Title | | |
|--|-----------|----------|
| Size A4 | Number | Revision |
| Date: 2015-07-21 | Sheet of | |
| File: D:\projekty\...\sch_gen3faz.SchDoc | Drawn By: | |

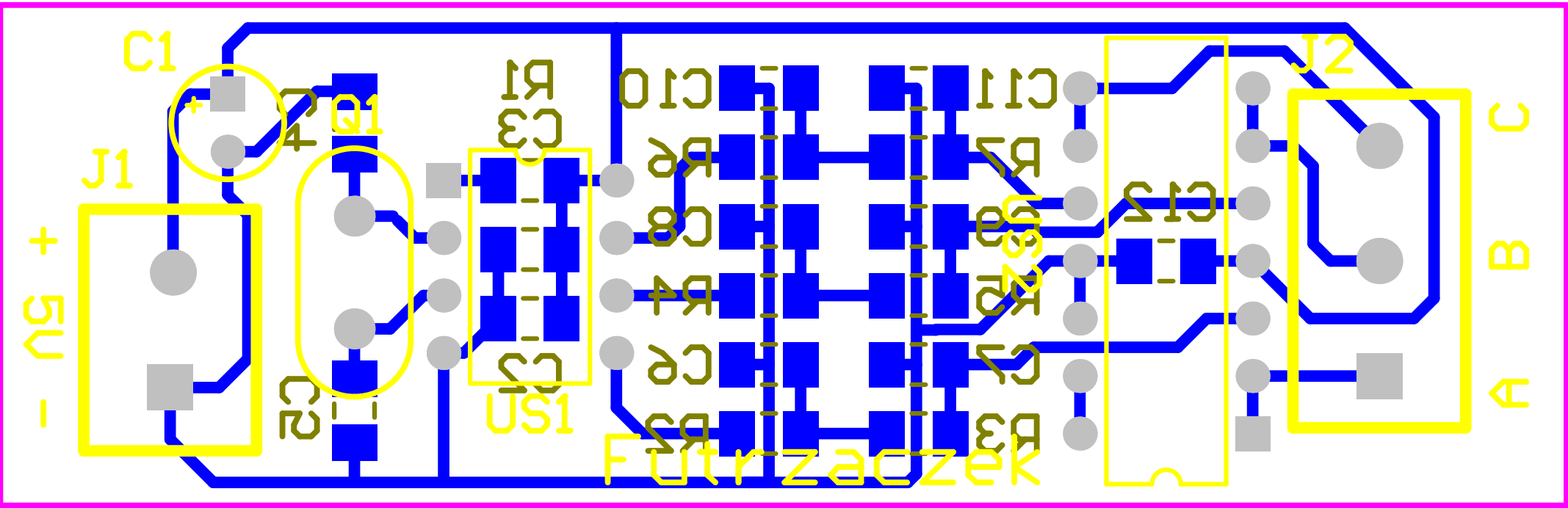
1

2

3

4

+5V



| Comment | Description | Designator | Footprint | LibRef | Quantity |
|----------|---|--------------------------------------|--------------------|----------------|----------|
| 100u/16V | Polarized Capacitor | C1 | 2,5/5mm elektrolit | kond biegunowy | 1 |
| 470p | | C2 | MELF-1206 | kondensator | 1 |
| 100n | | C3, C6, C7, C8, C9, C10, C11, C12 | MELF-1206 | kondensator | 8 |
| 18p | | C4, C5 | MELF-1206 | kondensator | 2 |
| ARK2 | | J1 | ARK2 5mm | ARK2 | 1 |
| ARK3 | | J2 | ARK3 5mm | ARK3 | 1 |
| 16MHz | | Q1 | kwarc 5mm | kwarc | 1 |
| 4,7k | | R1, R2, R4, R6 | MELF-1206 | rezystor | 4 |
| 33k | | R3, R5, R7 | MELF-1206 | rezystor | 3 |
| ATtiny25 | 8-Bit AVR Microcontroller with 1K Byte of Flash Memory | US1 | 8P3 | ATtiny12V-1PI | 1 |
| LM324 | Quadruple Operatio | US2 | N014 | LM324AN | 1 |