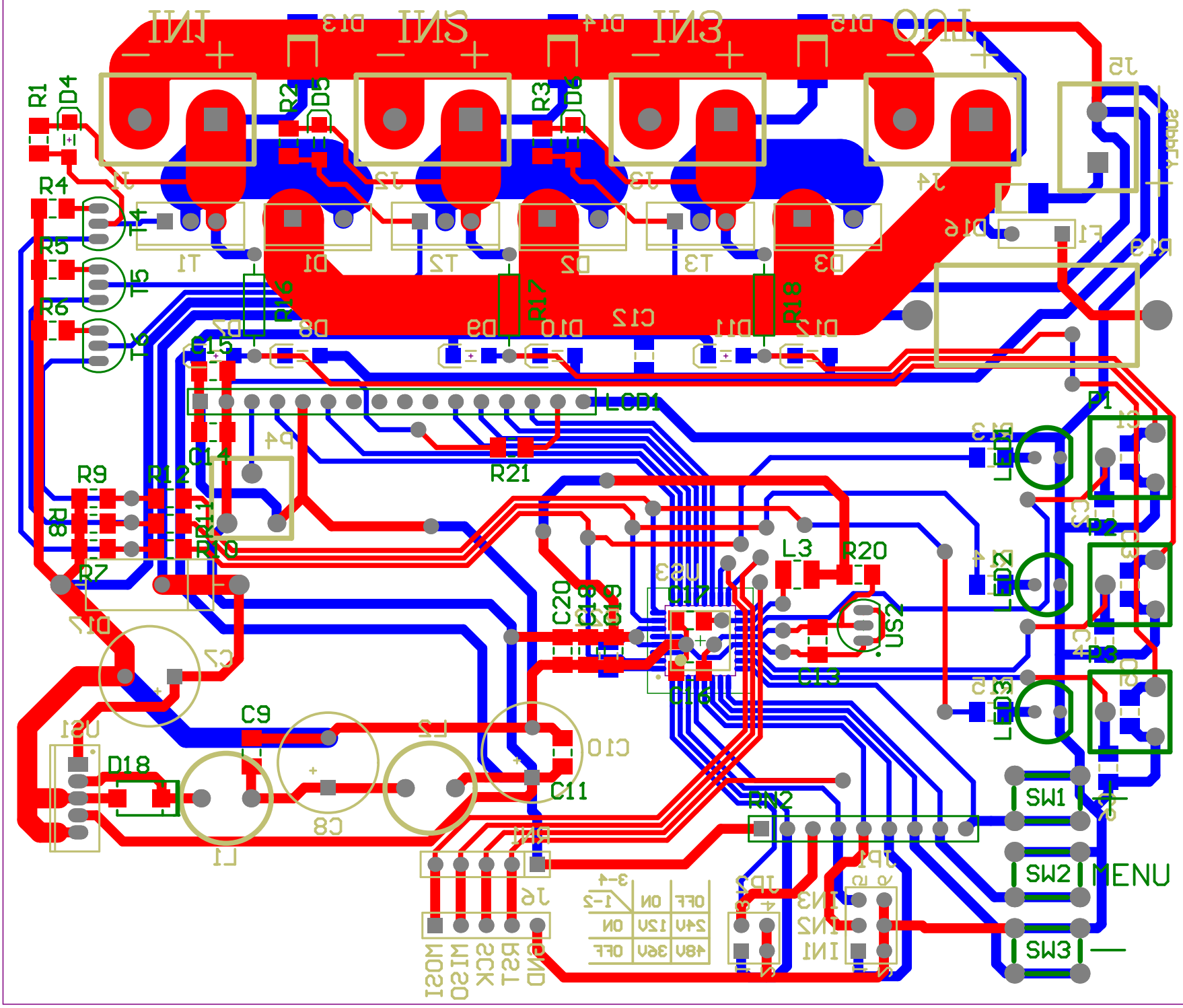


Title		
Size	Number	Revision
A2		
Date:	2013-12-18	Sheet of
File:	D:\mcsdkv\monitor-con-SchDoc	Drawn by:



Comment	Description	Designator	Footprint	LibRef	Quantity
10u		C1, C3, C5, C12, C13, C14, C20	MELF-1206	kondensator	7
100n		C2, C4, C6, C9, C11, C15, C16, C17, C19	MELF-1206	kondensator	9
100u/63V	Polarized Capacitor	C7	5/10mm elektrolit	kond biegunowy	1
470u/16V	Polarized Capacitor	C8, C10	5/10mm elektrolit	kond biegunowy	2
10n		C18	MELF-1206	kondensator	1
MBR1660	Schottky Rectifier	D1, D2, D3	TO-220AC	MBR1645	3
15V	Zener Diode	D4, D5, D6	dioda MINIMELF	D Zener	3
BAS85	Schottky Diode	D7, D8, D9, D10, D11, D12	dioda MINIMELF	D Schottky	6
1N4007	Default Diode	D13, D14, D15, D16	MELF/DO-213AB	Diode	4
1.5KE56A	Zener Diode	D17	dioda 17,5mm	D Zener	1
SS14	Schottky Diode	D18	SMA/DO-214AC	D Schottky	1
BKS 400mA	Fuse	F1	Fuse 5mm	Fuse	1
ARK2 7,5mm		J1, J2, J3, J4	ARK2 7,5mm	ARK2	4
ARK2 5mm		J5	ARK2 5mm	ARK2	1
Goldpin 5pin	Header, 5-Pin	J6	HDR1X5	Header 5	1
Goldpin 2x3pin	Header, 3-Pin, Dual row	JP1	HDR2X3	Header 3X2	1
Goldpin 2x2pin	Header, 2-Pin, Dual row	JP2	HDR2X2	Header 2X2	1
330uH	Inductor	L1, L2	dławik stojący	dławik	2
10uH	Inductor	L3	MELF-1210	dławik	1
4x16	LCD connector	LCD1	LCD_CON	LCD con	1
green		LED1	LED 5mm	LED	1
yellow		LED2	LED 5mm	LED	1
red		LED3	LED 5mm	LED	1
10k		P1, P2, P3, P4	pot mont poziom	pot mont	4
10k		R1, R2, R3, R22	MELF-1206	rezystor	4
330		R4, R5, R6	MELF-1206	rezystor	3
1k		R7, R8, R9, R10, R11, R12, R13, R14, R15	MELF-1206	rezystor	9
		R16, R17, R18	rez 10mm	rezystor	3
22		R19	rez_5W kostka	rezystor	1
4,7k		R20	MELF-1206	rezystor	1
47		R21	MELF-1206	rezystor	1
4x10k	drab rez x 4	RN1	SIL5	drab rez x 4	1
8x10k	Header, 9-Pin	RN2	SIL9	drab rez x 8	1
switch 6x6		SW1, SW2, SW3	tact switch 6x6	switch	3
IRF4905	HEXFET Power MOSFET	T1, T2, T3	TO-220AB	IRF4905	3
BF422	High Voltage Transistor NPN Silicon	T4, T5, T6	29-11	BF422	3
LM2575HVT-5.0	SIMPLE SWITCHER 1A Step-Down Voltage Regulator	US1	T05A	LM2575HVT-5.0	1
LM385-2.5	Adjustable Micropower Voltage Reference	US2	Z03A	LM285Z	1
ATmega8-16AC	8-Bit AVR Microcontroller	US3	32A_N	ATmega8-16AC	1